

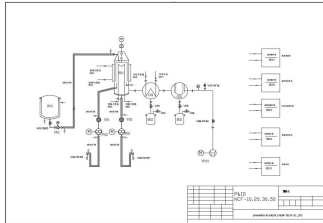
Laboratory SPD for CBD



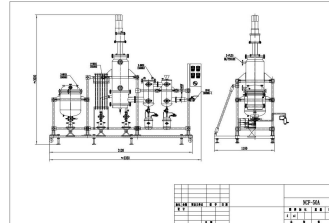
NCF-10A



NCF-50A



PID (Process & Instrumentation Drawing)



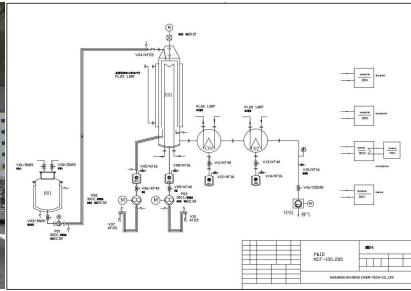
CAD (Computer Aided Design)

NO.	AC613-1	AC613-2	AC613-3	AC613-4
Model	NCF-10A	NCF-20A	NCF-30A	NCF-50A
Raw Material Tank B01	Jacketed Tank: 15L	Jacketed Tank: 15L	Jacketed Tank: 30L	Jacketed Tank: 50L
	2 mirrors at the top, Insulated ball valve at the bottom			
Feeding P01	Gear pump			
	Flow: 2L~5L/H (1.2cc)	Flow: 5L~15L/H (4.5cc)	Flow: 5L~15L/H (4.5cc)	Flow: 5L~20L/H (15cc)
	200W precision grinding motor, Electronic speed control			
Evaporator E01	Evaporation Area: 0.1m²	Evaporation Area: 0.2m²	Evaporation Area: 0.3m²	Evaporation Area: 0.5m²
	Film forming method: Scraper			
	Material: 316L			
	Sealing form: Magnetic			
	Film forming motor: 370W frequency speed regulation		Film forming motor: 750W frequency speed regulation	Film forming motor: 1.5KW frequency speed regulation
Cold Trap C01	Coil, cooling circulator			
Cold Trap C02	Liquid nitrogen or dry ice cooling			
Heavy Discharge P02	Gear pump			
	Flow: 2L~5L/H	Flow: 5L~15L/H	Flow: 5L~15L/H	Flow: 5L~20L/H
	200W precision grinding motor, Electronic speed control			200W Frequency Control
Lightweight Discharge P03	Gear pump			
	Flow: 2L~5L/H	Flow: 5L~15L/H	Flow: 5L~15L/H	Flow: 5L~20L/H
	200W precision grinding motor, Electronic speed control			200W Frequency Control
Material Pipeline	Sandwich insulation			
Support and Assembly	304 stainless steel pipe			
Electrical Box	Hanging type			
Overall Size(mm)	2350*900*1900	2580*900*2050	2750*900*2200	3350*1100*3000
Weight(KG)	400	180	510	955
Package Size(mm)	2465*1010*2165	2650*1020*2400	2870*1020*2200	3400*1200*2600

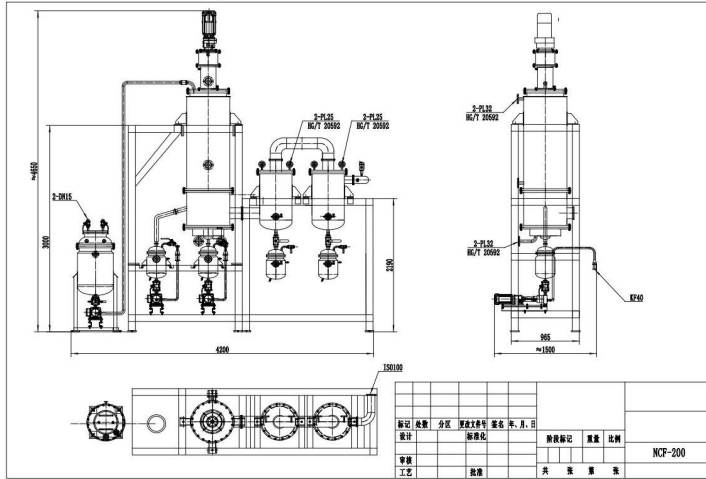
Pilot SPD for CBD



NCF-100



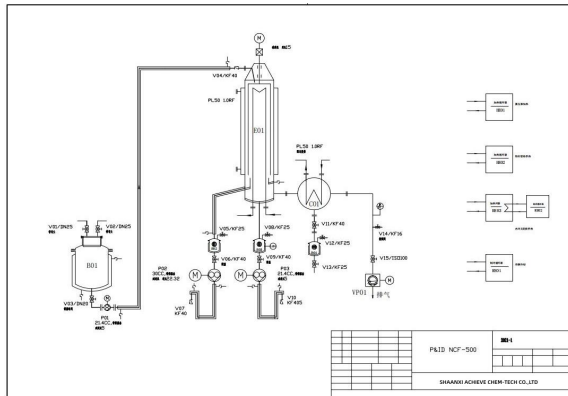
PID



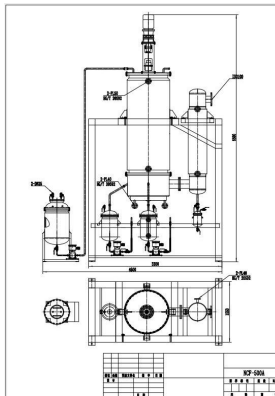
CAD

NO.	AC614-1	AC614-2
Model	NCF-100	NCF-200
Raw Material Tank B01	Volume: 100L	
	Sandwich insulation	
Feeding P01	Insulated gear pump	
	Flow: 20L~100L/H	
	750W frequency speed regulation	
Evaporator E01	Evaporation Area: 1m ²	Evaporation Area: 2m ²
	Film forming method: Scraper	
	Material: 316L	
	Mechanical seal	
	Film forming motor: 1.5KW, frequency speed regulation	Film forming motor: 3KW, frequency speed regulation
Cold Trap C01	1 m ² process cold trap, 5L receiving tank	2 m ² process cold trap, 5L receiving tank
Cold Trap C02	1m ² cooling circulator cold trap, 5L receiving tank	2m ² cooling circulator cold trap, 5L receiving tank
Intermediate Storage Tank B02	5L jacketed tank	10L jacketed tank
Heavy Discharge P02	Gear pump 30CC	
	Flow: 20L~100L/H	
	750W frequency speed regulation	
Intermediate Storage Tank B03	5L jacketed tank	10L jacketed tank
Lightweight Discharge P03	Gear pump	
	Flow: 20L~100L/H	
	750W frequency speed regulation	
Material Pipeline	Sandwich insulation	
Support and Assembly	304 stainless steel pipe	
Electrical Box	Non-explosion-proof/hanging type	
Internal Cooling Control Unit HE03	Water tank capacity: 100L, heating: 6KW, heat exchange area: 5 m ²	Water tank capacity: 100L, heating: 6KW, heat exchange area: 10 m ²
Insulation Unit HE02	Water tank capacity: 100L, heating: 9KW	
Overall Size(mm)	3900*1400*3900(including raw material tank)	4200*1550*4650(including raw material tank)
Weight(KG)	2600	3400
Package Size of Main Frame(mm)	2650*1400*2450	4100*1300*2400
Package Size of Evaporator(mm)	2500*800*1000	3100*800*1000
Package Size of Raw Material Tank(mm)	850*850*1900	850*850*1900

Industrial SPD for CBD



PID for NCF-500



CAD

NO.	AC615-1
Model	NCF-500
Raw Material Tank B01	Volume: 200L Sandwich insulation
Feeding P01	Insulated gear pump 21.4CC Flow: 100L~300L/H 0.75KW frequency speed regulation
Evaporator E01	Evaporation Area: 5 m ² Film forming method: Scraper Material: 316L Mechanical seal Film forming motor: 5.5KW frequency conversion
Cold Trap C01	10 m ² column tube
Ultra Light Storage Tank B04	20L jacketed tank
Intermediate Storage Tank B02	50L storage tank with insulation
Heavy Discharge P02	Gear pump 30CC Flow: 20L~100L/H 0.75KW frequency speed regulation
Intermediate Storage Tank B03	50L storage tank with insulation
Lightweight Discharge P03	Gear pump 21.4CC Flow: 100L~300L/H 0.75KW frequency speed regulation Liquid level transmitter, linked with discharge pump, high level open and low level close
Material Pipeline	Sandwich insulation
Support and Assembly	304 stainless steel pipe
Electrical Box	Non-explosion-proof
Internal Cooling Control Unit HE03	Water tank capacity: 200L, heating: 9KW, heat exchange area: 20 m ²
Insulation Unit HE02	Water tank capacity: 200L, heating: 12KW
Overall Size(mm)	4500*1550*6500(With raw material storage tank)
Weight(KG)	6000
Package Size of Upper Main Frame(mm)	4700*1400*2300
Package Size of Lower Main Frame(mm)	4700*1400*1900
Package Size of Evaporator(mm)	4000*1300*1500
Package Size of Condenser(mm)	2400*1600*800